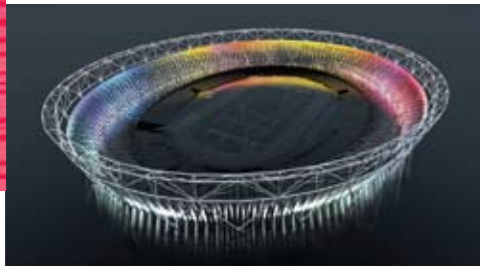




above: anna glasbrook



olympic wrap: smallhorn



Ptolemy Mann **chairperson** www.ptolemymann.com



from top: selby; smallhorn; lewis

one day symposium

● **The Architecture of Cloth, Colour & Space**
one day symposium

Saturday 27 October 11am – 5pm registration from 10am

▼ **The Chapter House Room, Gloucester Cathedral GL1 2LX**

Join us for a stimulating day of keynote speakers with ample opportunity for networking. We are delighted to be presenting this day of discovery and debate in the glorious setting of Gloucester Cathedral where the accompanying exhibition is to be held.

Now, more than ever, we live in a climate where diversification and the exchange of ideas across several different disciplines is paramount; to survive creatively we have to apply our skills broadly but with finesse and personal signature. In keeping with the exhibition title: *The Architecture of Cloth, Colour and Space* this symposium aims to engage you in the working practice of exceptional people across the several disciplines the title defines. A colour theorist who engages with computer technology and paint, an artist who wraps facades with colour, an architect who circumnavigates the world through food and innovation, a weaver bridging the commercial craft divide, a textile artist creating installations for outside spaces; they all bring something different to their respective worlds and ours. Join us in the monumental gothic space of Gloucester Cathedral for a day of creative provocation and glorious debate.

keynote speakers & contributors

Margo Selby

international textile designer who builds fabrics on a hand loom using structure and fibre combinations that transform threads into three dimensional forms. Margo has rapidly become recognised as a pioneer within contemporary textiles winning numerous craft and design awards and being involved with high profile design projects such as *Eureka* with Design Nation and *Hidden Art Select*. She is passionate about design and has a positive approach to working alongside other designers and companies with a similar ethos. Recent collaborations include bespoke products for Habitat, The Old Curiosity Shop and Tate Modern. www.margoselby.com

Sophie Smallhorn

artist and colour consultant. Her work explores the relationships between colour, volume and proportion. She creates simple abstract sculptural pieces which act as vehicles to hold compositions of colour. More recently her work has evolved onto a larger format with architectural projects including a large colour installation for the Olympic stadium. Talking about this transition of scale in her work and how the area between an open ended art commission and the constraints that are particular to a design brief have both inspired and informed her creative process. www.sophiesmallhorn.co.uk

Garth Lewis

designer and painter who works with colour in innovative and inspiring ways using the digital *Chromafile* colour system mixed with hands on painting and printing. In his talk, *Colour and Space*, Garth will discuss his own painting practice and supporting research with colour and computing. He will demonstrate the uses and effect of colour with reference to his book, *2000 Colour Combinations*, and the 2012 *Virtual Colour Course* software program.



Alex Haw

architect and director of award winning practice *atmos* – a practice dedicated to rethinking and improving our spatial world across the scales, from furniture to urban design. The office is currently designing a new eco-city in the Middle-East, a 120-unit luxury hotel, some large London houses and public landscape installations for 2012. He will be speaking on the metaphor and practice of weaving in architecture; on the search for sensuality and comfort and narrative trajectories; on threading meaning through spatial experience. www.atmosstudio.com

Anna Glasbrook

textile artist, designer and installation artist. See main exhibition text overleaf. www.annaglasbrook.com

All have international reputations for their work and drive forward innovation in textile design, colour practice and architecture. The conference will explore the influences of textiles and colour and the meaning they bring to architecture and spaces, adding to design and spatial awareness. It promises to be a day of innovation, inspiration and enquiry with discussion and discovery at the heart of the conference.

Tickets

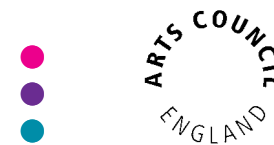
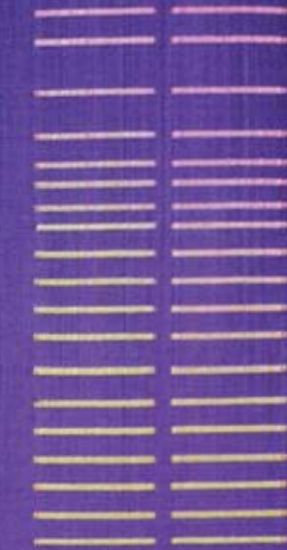
Advance: £45; concessions (includes students and Friends of SIT) £25. From October 15th: £55; concessions £30
All ticket prices include lunch and coffee/tea on arrival

Booking

Booking through Stroud International Textiles website, shown left, or contact SIT office on +44 (0)1453 751056

www.stroudinternationaltextiles.org.uk

Ptolemy Mann & Anna Glasbrook + symposium





The Architecture of Cloth, Colour & Space

27 Oct – 31 Dec 2012 Gloucester Cathedral

Ptolemy Mann & Anna Glasbrook

exhibition

information



Visitor information is available from the cathedral website: gloucestercathedral.org.uk
Access: there is disabled access within the cathedral.
Parking: there is no parking at the cathedral but there are several car parks in the city.
Refreshment: The cathedral has a cafe and also the city has many excellent places to eat.

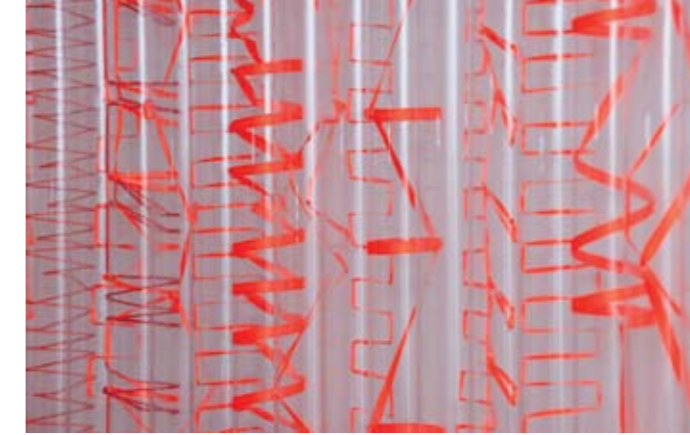
There may be days when access to some areas of the Cathedral is restricted due to services and other major events. For these and other closures please see gloucestercathedral.org.uk

There is no formal charge for admission, but adult visitors are asked to make a donation of £5 each towards the maintenance of this magnificent building.

select: textiles
 Presented by *Stroud International Textiles* based in Stroud Gloucestershire, we are an arts organisation that profiles leading and emerging international, national and local contemporary crafts and textiles. We organise two major exhibitions and linked events a year called *Select*. As part of our spring *Select* in May we also run two weekends where craft and textile artists and designer makers open their studios and hold exhibitions throughout the Stroud valleys. This is called *Select Trail*.

Acknowledgements
 Thanks to: Ptolemy Mann; Anna Glasbrook; Kristian Stringer; the wonderful cathedral staff; Cathedral Flower Guild; Sarah Dixon of Spider Creatives for digital applications.

Director **Lizzi Walton**
 Curators **Ptolemy Mann & Lizzi Walton**
 Design **Chris J Bailey**
 Published by **Stroud International Textiles**
 Print **Ambassador.co.uk**

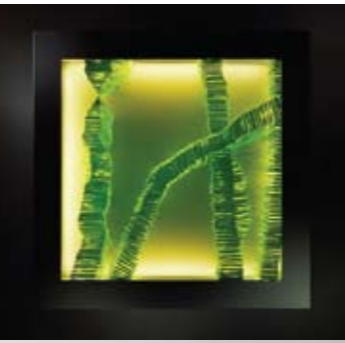


Anna Glasbrook

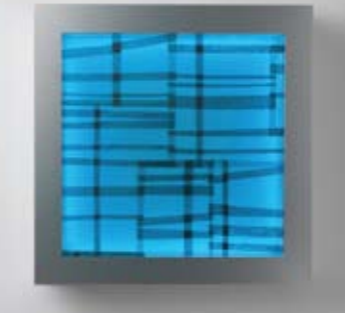
Somerset-based artist and designer Anna Glasbrook works with textiles to create 'art for architecture'. Her bespoke installations using brightly coloured threads and materials push the boundaries of textiles to become vibrant three-dimensional 'drawings' in space. Strongly influenced by both the built and natural environment, details such as the rivulets on a beach, worn grooves in a stone wall or the ends of a stack of cut timber are frequent starting points in her work. Always pushing the boundaries of textiles, Anna places the materials between two or more transparent layers to create an infinite weaving in space designed to entice you to investigate further and experience the colour, light and form. Her technique allows her to explore the space between the lines, rather than the line itself.

Recently graduated from the Bath School of Art & Design, Anna has had her work featured at the Chelsea Flower Show, the opening ceremony of the Holbourne Museum in Bath, and been nominated for the FX Design Awards *Breakthrough Talent of the Year 2011*.

Sculptural installations capture colour and movement and play with perspective and the perception of space. 'Working in three-dimensions is exciting – allowing me to express a combination of delicacy and strength.'



left & right: anna glasbrook



cover, right & far left: ptolemy mann

Ptolemy Mann

'Weaving, designing, writing, consulting, creating works for interiors and fashion, collaborating with architects, designers and other makers, Ptolemy Mann works across the spectrum of her field and beyond. All Ptolemy's work is rooted in a rigorous appreciation of chromatic spectrums, spatial awareness and the psychological impact of colour. Her work has a powerful impact on the viewer. By contrast her subtle application of colour on a building facade brings calm and integrity which calms the visitor.'

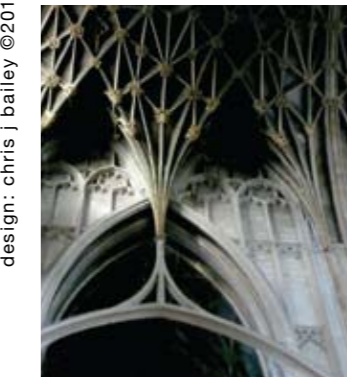
Philip Hughes *Director Ruthin Art Centre*

Since graduating from Central Saint Martins and the Royal College of Art in 1997, Ptolemy has established herself as a unique creator of one-off, woven, architectural artworks. Her woven and printed textiles all explore a dynamic colour palette, reminiscent of the Bauhaus school. Among the weavers and artists she admires are Rothko, Joseph & Anni Albers and the Bauhaus in general. Recent work includes designs for John Lewis, Eloise Gray Collaborates, Christopher Farr carpets. Daring, energetic, experimental, she is forever searching for ways to push her work and creative practice further. She remains at heart, a weaver, 'rooted in tradition', in her own words, yet possessed of a sizzling contemporary aesthetic. 'One off art pieces are still the heart of what I do' she says simply.

- The Architecture of Cloth, Colour & Space
- Saturday 27 October – Monday 31 December 9am – 6pm
- Gloucester Cathedral, College Green GL1 2LX free admission



www.stroudinternationaltextiles.org.uk



design: chris j bailey ©2012 printed with vegetable based inks stroud international textiles ©2012